

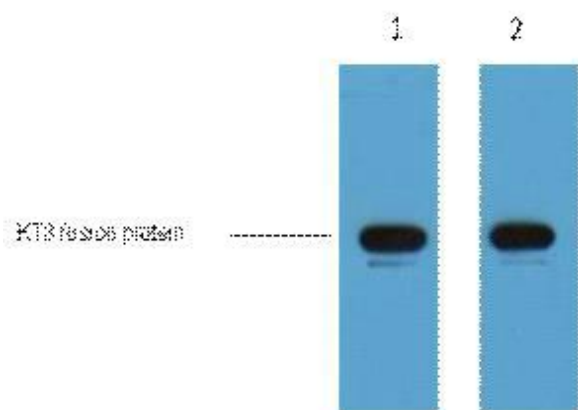


KT3-Tag Monoclonal Antibody(3D11)

Catalog No	YP-Ab-04737
Isotype	IgG
Reactivity	Species independent
Applications	WB
Gene Name	
Protein Name	
Immunogen	Synthetic Peptide of KT3-Tag
Specificity	The antibody detects KT3 tag fusion proteins.
Formulation	PBS, pH 7.4, containing 0.5%BSA, 0.02% sodium azide as Preservative and 50% Glycerol.
Source	Monoclonal, Mouse
Purification	The antibody was affinity-purified from mouse ascites by affinity-chromatography using specific immunogen.
Dilution	WB: 1:5000
Concentration	1 mg/ml
Purity	≥90%
Storage Stability	-20°C/1 year
Synonyms	
Observed Band	
Cell Pathway	
Tissue Specificity	
Function	
Background	The KT3 epitope tag is commonly engineered onto the N- or C- terminus of a protein of interest so that the tagged protein can be analyzed and visualized using immunochemical methods. KT3 epitope tag can be used to monitor expression of the protein products transfected with cDNA constructs. The recognized KT3 epitope represents the amino acid sequence KPPTPPPEPET derived from the Simian Virus 40 (SV40) large T-antigen.
matters needing attention	Avoid repeated freezing and thawing!
Usage suggestions	This product can be used in immunological reaction related experiments. For more information, please consult technical personnel.



Products Images



1ug KT3 fusion protein+ Primary antibody dilution at
1) 1:5000 2) 1:10000